

ADJUSTABLE PEDESTAL PV 2.3/3.5

TECHNICAL DATASHEET

SPECIFICATIONS

The PV 2.3/3.5 is an adjustable pedestal with a range of 23–35 mm. This pedestal is adjustable by its screw clamping system and consists of two pieces. All top plates and accessories for use with the Comfort range can be placed on this pedestal.

The bottom piece has eight vertical reinforcement ribs and 4 holes. The top piece of the Comfort pedestal has eight blocking ribs.

Color	black
Weight	156 g/pieces
Support area	300 cm ²
Outside diameter	215 mm
Adjustable height	23–35 mm



Recycled material

Weatherproof

Resistant to temperatures between -25 and +70°C

PP compound

Compliant with the DTU standard 43.1 and 51.4

Capacity : 2.400 kg /m²

Tested on Broof T4 and BFL-S1

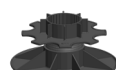
OTHER COMFORT PEDESTALS



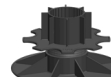
PV 3.5/5



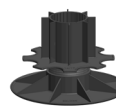
PV 5/8



PV 8/11

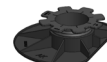


PV 11/14

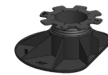


PV 14/17

PEDESTALS WALL VERSION



AK 3.5/5



AK 5/8

TOP PLATE

For tiles



C2/4T



C3/4T



C6/4T



STICKSOL

For wood



CPV+



Other

CO

ACCESSORIES

Extension piece



F30



AF100

Slope corrector



HS2



HA5

Fitting pieces



1 - 3 mm

LOAD/M²

Wood

Tous les 600 mm L/l 1.350 kg/m²
Tous les 500 mm L/l 2.400 kg/m²
Tous les 400 mm L/l 3.750 kg/m²

Tiles

600 x 600 mm (2,25 pces/m²) 1.350 kg/m²
500 x 500 mm (4,00 pces/m²) 2.400 kg/m²
400 x 400 mm (6,25 pces/m²) 3.750 kg/m²

ADJUSTABLE PEDESTAL PV 2.3/3.5

TECHNICAL
DATASHEET

PACKAGING

Bag

Dimensions	1.450 x 750 mm
Weight	7,8 kg
Quantity	50 pieces/sac

Pallet

Dimensions	1.200 x 1.100 x 2.200 mm
Weight	187,2 kg
Quantity	24 sacs/pallet - 1.200 pieces

Discover here how
sustainable our assortment
is:



The calculation is valid with proper placement and installation without extension pieces. For a taller construction with extension pieces, these results are not applicable. A minimum of 1.5 threads must be threaded into the pedestal.



Made in Belgium