

COMFORT - PV 3.5/5

TECHNICAL DATASHEET

SPECIFICATIONS

The PV 3.5/5 is an adjustable pedestal with a range of 35–50mm/1,38-1,97". This pedestal is adjustable by its screw clamping system and consists of two pieces. All top plates and accessories for use with the Comfort range can be placed on this pedestal.

The bottom piece has eight vertical reinforcement ribs and 4 holes. The top piece of the Comfort pedestal has eight blocking ribs.

Colour	Black
Support area	300 cm ² 46,50 in ²
Outside diameter	215 mm 8,46"
Weight	12 2 g/piece
Adjustable height	35 - 50 mm 1,38 - 1,97"



Recycled material



Weatherproof



Resistant to temperatures between -25 and +70°C



PP compound



Compliant with the DTU standard 43.1 and 51.4



Capacity: 2.400 kg/m²

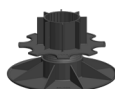


Tested on Broof T4 and BFL-S1

OTHER PEDESTALS



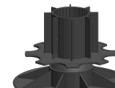
PV 2.3/3.5



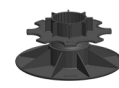
PV 11/14



PV 5/8

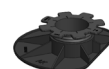


PV 14/17



PV 8/11

PEDESTALS WALL VERSION



AK 3.5/5



AK 5/8

TOP PLATE

For tiles



C2/4T



C3/4T



C6/4T



STICKSOL

For wood



CPV+
Other



CO

ACCESSORIES

Extension piece



F30



AF10 0

Slope corrector



HS2



HA5

Fitting pieces



1 - 3 m m

Tilelock visible



Tilelock invisible



LOAD/M²

Wood

Every 600 mm l/w	1.350 kg/m ²
Every 500 mm l/w	2.400 kg/m ²
Every 400 mm l/w	3.750 kg/m ²

Tiles

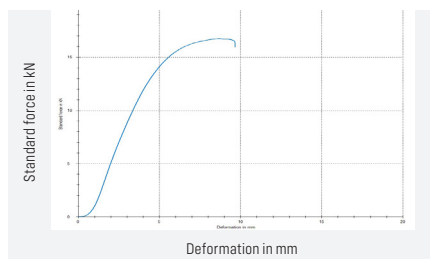
600 x 600 mm (2,25 pcs/m ²)	1.350 kg/m ²
500 x 500 mm (4,00 pcs/m ²)	2.400 kg/m ²
400 x 400 mm (6,25 pcs/m ²)	3.750 kg/m ²

COMFORT - PV 3.5/5

TECHNICAL
DATASHEET

PRESSURE TEST (ZWICK)

1.440 kg



PACKAGING

Bag

Dimensions 1.450 x 750 mm
57,09 x 29,53 in
Gross weight 6,1 k g
Quantity 50 pieces/bag

Pallet

Dimensions 1.200 x 1.100 x 2.200 mm
47,24 x 43,30 x 86,61 i n
Gross weight 1 66,4 kg
Quantity 24 pieces/bag – 1.200 pieces

Discover here our
contribution to a sustainable
world:



The calculation is valid with proper placement and installation without extension pieces. For a taller construction with extension pieces, these results are not applicable. A minimum of 1.5 threads must be threaded into the pedestal.

